

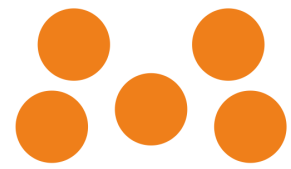
## Robot mount and accessories

### USER MANUAL

Robot stand, table, wheel set, folding teach pedant and more.



<b>RM</b>	Version: 1.00
Robot mount and accessories	Page: 2/4
<a href="http://www.setuprobotics.com">www.setuprobotics.com</a> • <a href="mailto:info@setuprobotics.com">info@setuprobotics.com</a>	



## Preface

Congratulations with your robot mount and accessories.

RM-RS In the simplest configuration the robot stand is a pyramidal stand with high stiffness there can be bolted to a concrete floor.

The mounting plate fits UR3(e), UR5(e), UR10 robots and includes 4 general purpose shelf. One shelf is typically used to store the robot cables. For the UR10e a special mounting plate is used. (The UR10e holes fits the standard plate also)



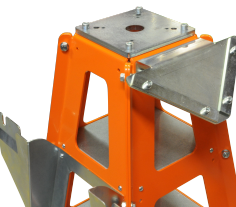
## Accessories:

The robot mount is modular configured.

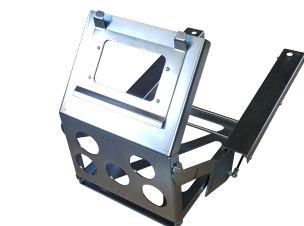
RM-TB: On the side of the stand can be mounted up to 4 pick&place tables. The robot controller is mounted on the side. Typically below the table. There are also trays for the table for fast exchange of parts



RM-FR: To supply the robot tool with pressure regulated clean and dry air a regulator is mounted.



RM-AB: To adjust items accurately on the gripper they can be dropped and re-picked on a alignment wedge.



RM-FTS: The teach pendant can be stored away using the folding holder mounted under the table



RM-TS: A fixed teach pendant holder can also be mounted directly on the stand

<b>RM</b>	Version: 1.00
Robot mount and accessories	Page: 3/4
<a href="http://www.setuprobotics.com">www.setuprobotics.com</a> • <a href="mailto:info@setuprobotics.com">info@setuprobotics.com</a>	



RM-WS: If the robot should be moved around a wheel set can be mounted.

#### RM-CP

If the robot is used in an area without air supply a low noise compressor can be mounted on a special version of the wheel set.



Robot stand + robot + controller + and all accessories mounted together is named the assembly stand in the rest of the manual.

### Important message.



The robot mount are part of a partly completed machinery. A risk assessment is required for each usage.

It is the responsibility of the integrator to make the risk assessment and that all safety requirements and local regulations are complied with.

The robot stand must be bolted to the floor using proper concrete bolts or other clamping strong enough to secure the robot and mounting.

Special precautions must be taken when using the wheel set.

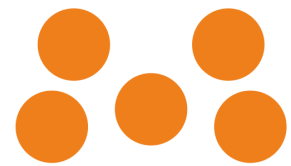
- Only operate robot above pick&place table / wheels.
- Always lock the wheels when robot is not transported.
- Only transport stand assembly on a plane and horizontal surface and with high precaution.
- Move stand assembly at a low speed when close to other things. Damage might occur to stand assembly and/or surrounding if bumped together.
- Make sure the assembly stand does not tilt. Be aware center of gravity changes during different robot movement and also amount objects on pick&place table. A contra weight on lowest shelf might be necessary.

Never use a damaged stand assembly.

When operating the folding teach pendant holder always do it gently, alone and be careful your fingers are not pinched.

The stand assembly is intended to be used in a clean and dry industrial environment. It is not to be used in potentially explosive environments or in life support applications.

<b>RM</b>	Version: 1.00
Robot mount and accessories	Page: 4/4
<a href="http://www.setuprobotics.com">www.setuprobotics.com</a> • <a href="mailto:info@setuprobotics.com">info@setuprobotics.com</a>	



## EC Declaration of conformity

Manufacturer:

SetupRobotics ApS  
Industrivaenget 6B, Melose  
3320 Skaevinge  
Denmark

Hereby is certified that the following product:

Description:

Type

Production year

Serial No (from)

Robot mount

Robot mount and accessories

RM-XX

2019

1

is partly completed machinery according to 2006/42/EC.

The complete machine must be in full compliance with all essential requirements of 2006/42/EC before the robot mount and its connected accessories are put into service. A comprehensive risk assessment must be carried out for each application as part of ensuring that all essential requirements are fulfilled. All essential requirements must be assessed. Instructions and guidance provided in the manual must be followed.

  
Uffe Safeldt  
COO, CTO  
Hillerød 2019.09.01